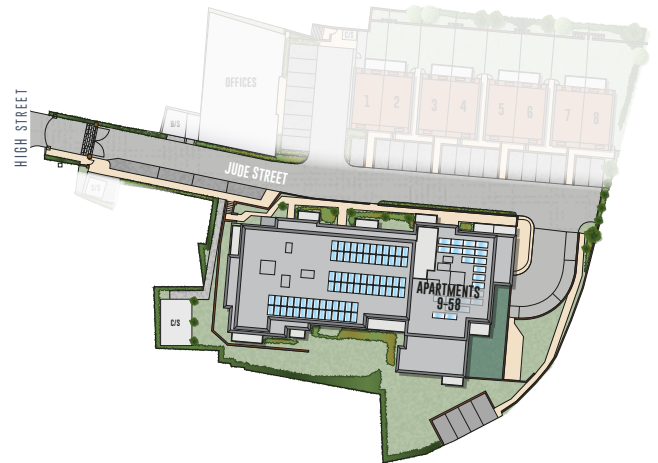


LIGHTFIELD

HIGH ST. BARNET. LONDON

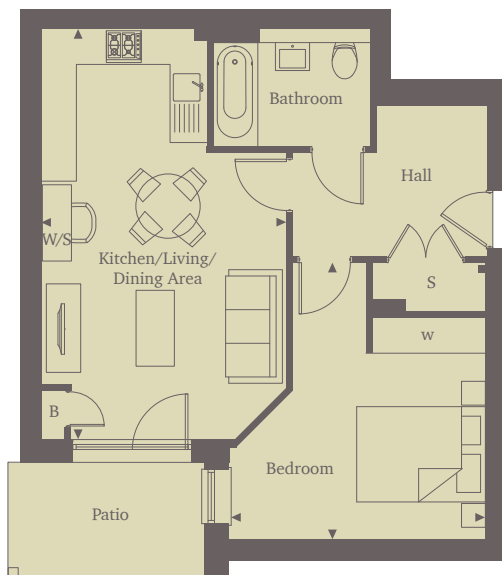


This site plan is a guide for illustrative purposes only. Landscaping shown is indicative only.

APARTMENT 29 ONE BEDROOM

This stylish, first floor, one-bedroom apartment benefits from a south-facing balcony. Enter via the spacious hallway, offering ample storage space and leading into the welcoming, open-plan kitchen/living/dining area. Work from home, enjoy a quiet night in or entertain friends and family in this versatile home, with a French door leading out onto the balcony. The sleek kitchen is equipped with energy-efficient, integrated appliances.

The spacious double bedroom enjoys a large, fitted wardrobe, with the luxury bathroom just across the hall. Enjoy easy access to the vibrant Capital from your new home at Lightfield in just 30 minutes.



Kitchen/Living/Dining Area

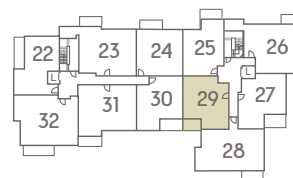
6.80m x 4.00m 22'3" x 13'1"

Bedroom

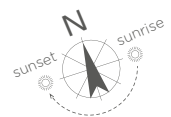
4.60m x 4.30m 15'1" x 14'1"

Total area

54.0 sq. mts. 581.30 sq. ft.



GROUND FLOOR



For more information please call 01494 685825 or shanlypartnership.com

◀ Point from which maximum dimensions are measured. Dimensions are intended for guidance only and may vary by plus or minus 7.6cm/3". The plots indicate general layout only which may vary from other plots. Kitchen and bathroom layouts indicative only.

W denotes wardrobe. S denotes storage. W/S denotes workstation. L denotes lift. B Boiler.

Please contact sales consultant for more information.

**SHANLY
PARTNERSHIP
— HOMES —**