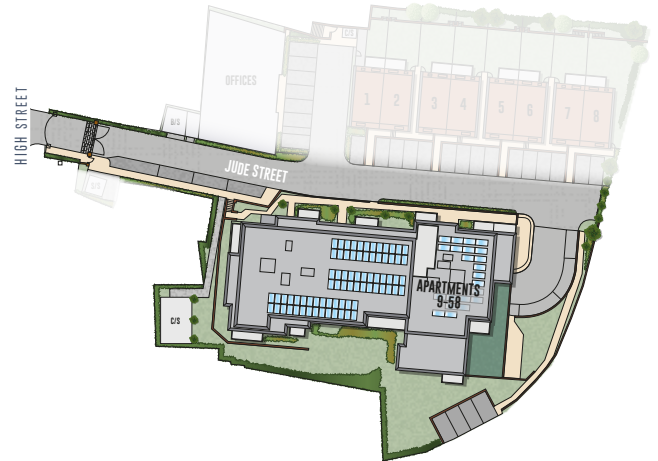


LIGHTFIELD

HIGH ST. BARNET. LONDON

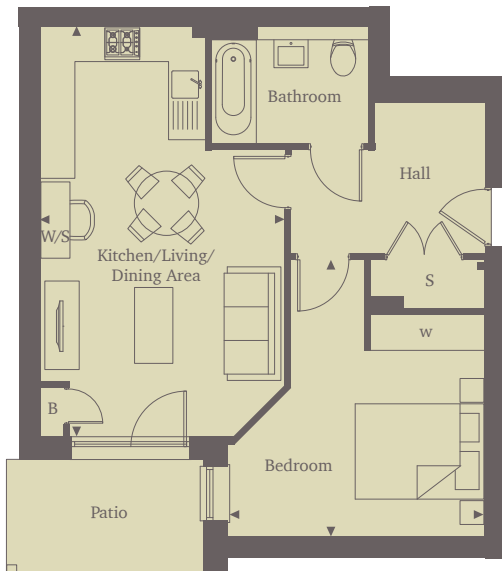


This site plan is a guide for illustrative purposes only. Landscaping shown is indicative only.

APARTMENT 18 ONE BEDROOM

Experience vibrant, contemporary living in this stylish, ground floor, one-bedroom apartment. Enter via the spacious hallway, benefitting from ample storage space and leading into the kitchen/living/dining area. This bright room is the ideal sanctuary for relaxing, homeworking or socialising, with the patio accessed by a French door extending your open-plan space further. The kitchen enjoys energy-efficient, integrated appliances.

The large double bedroom features a sleek fitted wardrobe, with the luxury bathroom just across the hall. Your new home at Lightfield offers all the benefits of a lush green suburb, while being just 30 minutes from the Capital.



Kitchen/Living/Dining Area

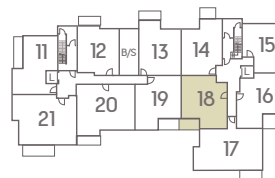
6.80m x 4.00m 22'3" x 13'1"

Bedroom

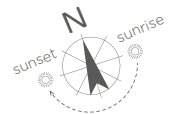
4.60m x 4.30m 15'1" x 14'1"

Total area

54.0 sq. mts. 581.30 sq. ft.



GROUND FLOOR



For more information please call 01494 685825 or shanlypartnership.com

◀ Point from which maximum dimensions are measured. Dimensions are intended for guidance only and may vary by plus or minus 7.6cm/3". The plots indicate general layout only which may vary from other plots. Kitchen and bathroom layouts indicative only.

W denotes wardrobe. S denotes storage. W/S denotes workstation. L denotes lift. B Boiler.

Please contact sales consultant for more information.

**SHANLY
PARTNERSHIP
— HOMES —**